



---

# **Maximize Message Pane**



# Contents

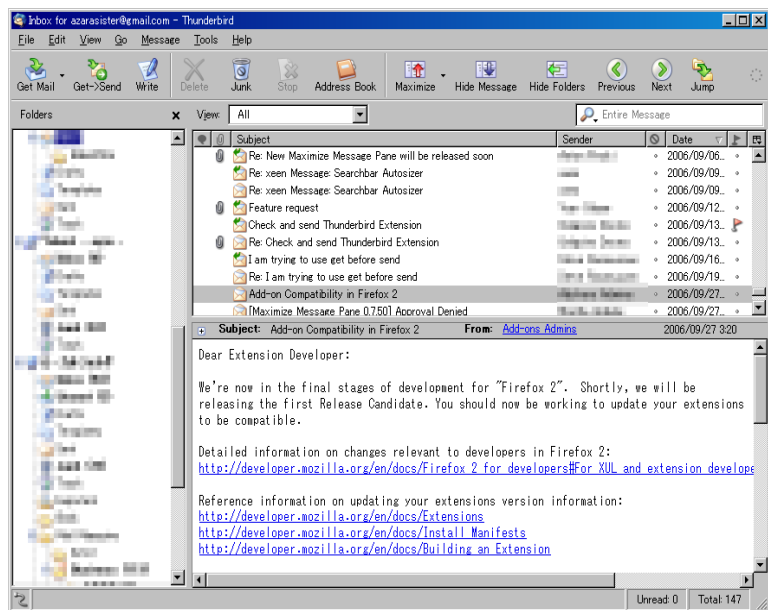
---

- What is Maximize Message Pane
- Changing Layout
  - How to Maximize Message Pane
  - How to Hide Message Pane
  - How to Hide Folder Pane
- Changing Folder Selection
- Changing Settings

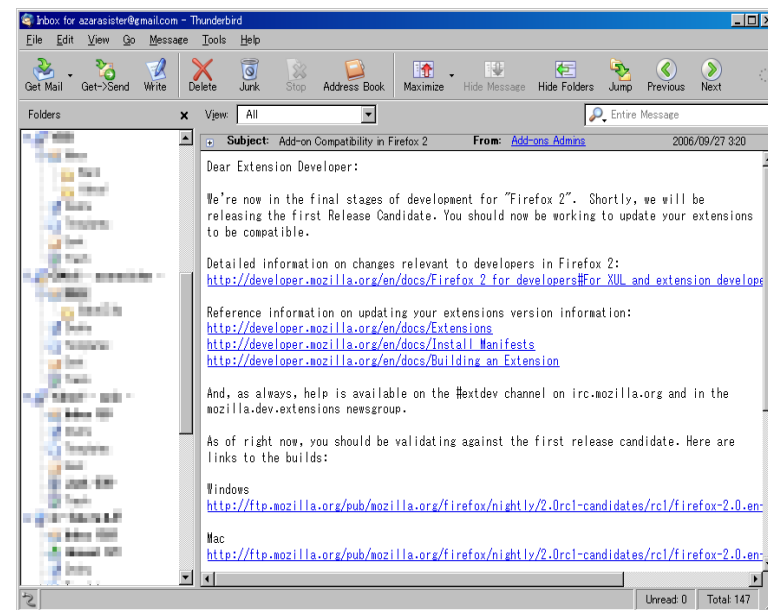
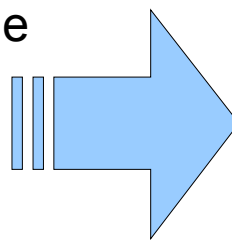


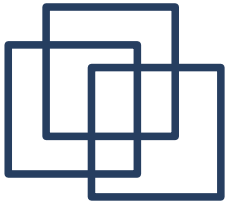
# What is Maximize Message Pane?

- Change visibility of the 3 panes for easy reading



Maximize Message Pane





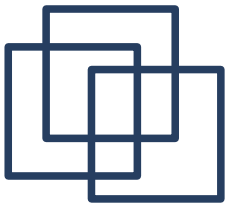
# What is Maximize Message Pane?

---

- Functionalities
  - Maximize message pane
  - Hide message pane
  - Hide folder pane
  - Jump folder
    - Change folder selection from toolbar and context menus
  - Save session
    - Save folder pane visibility and folder/message selection

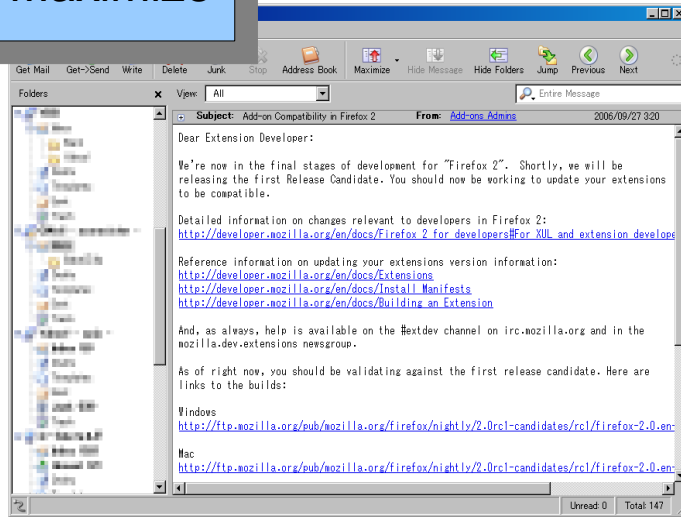


# Changing Layout

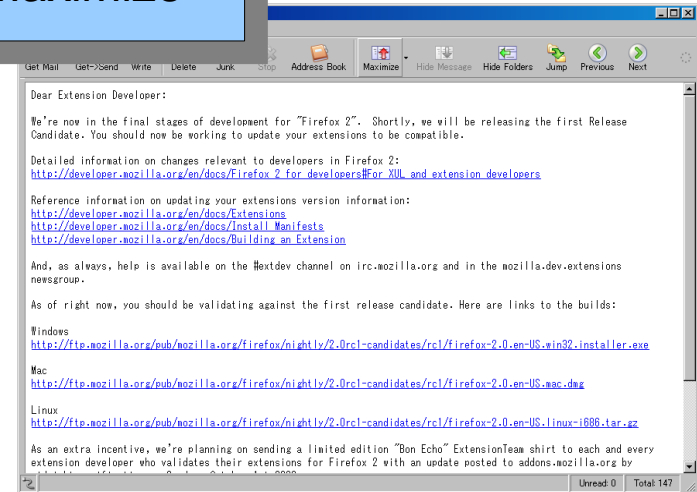


# Previews

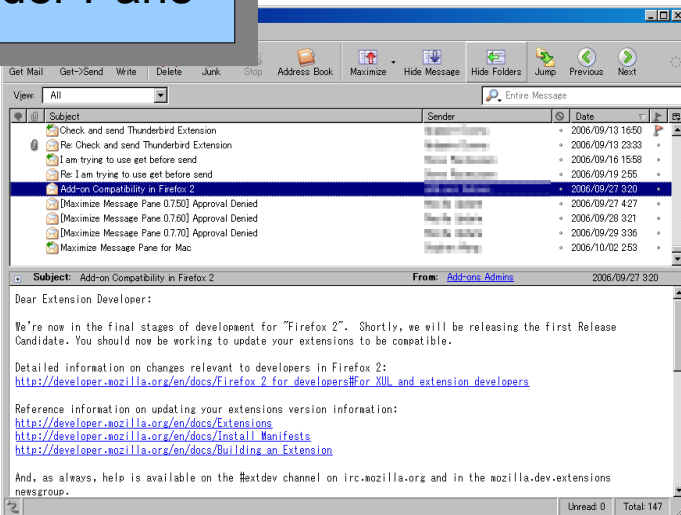
## Normal Maximize



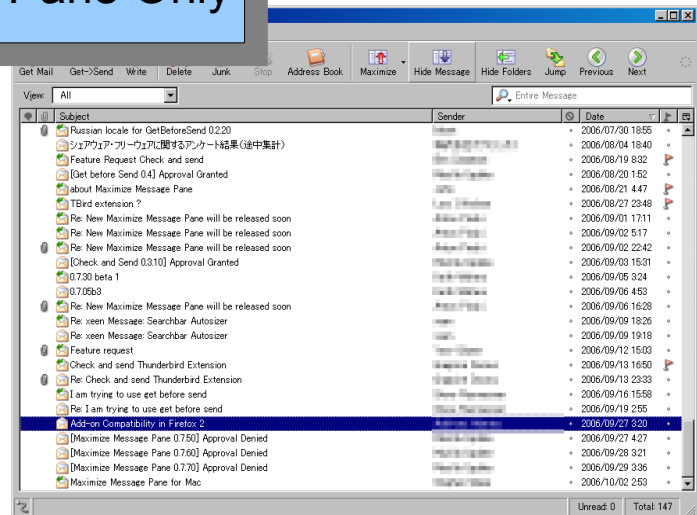
## Full Maximize

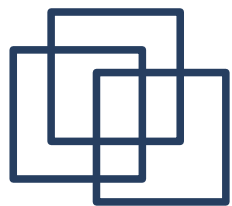


## No Folder Pane



## Thread Pane Only



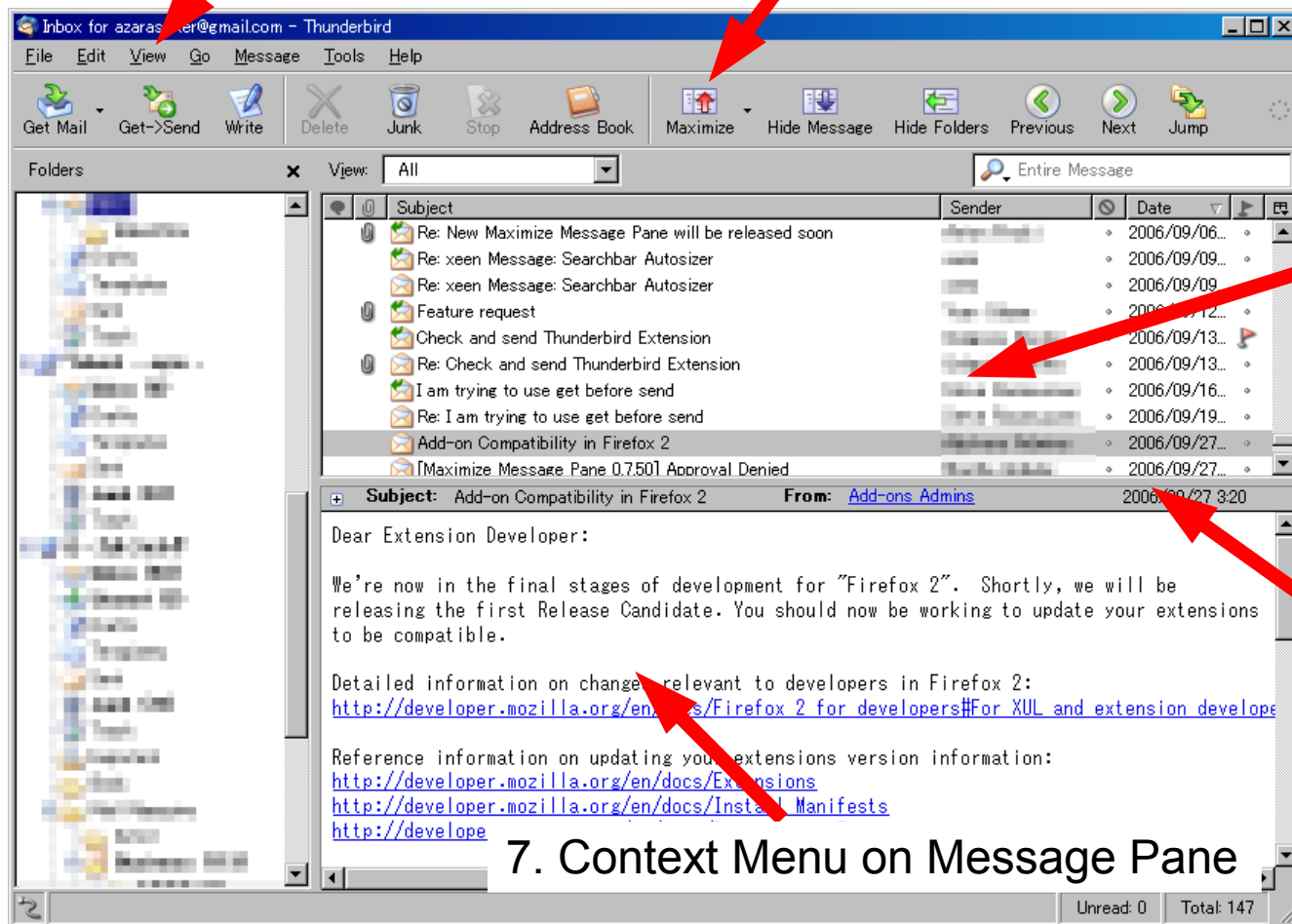


# How to Maximize Message Pane

6. Click View->Layout-> Maximize Message Pane

1. Click Maximize Button

You have 7 ways to maximize



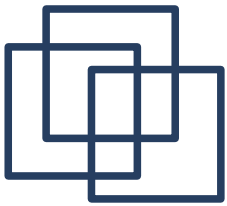
2. Double-click Message

3. Double-click Splitter

4. Double-click Message Header

7. Context Menu on Message Pane

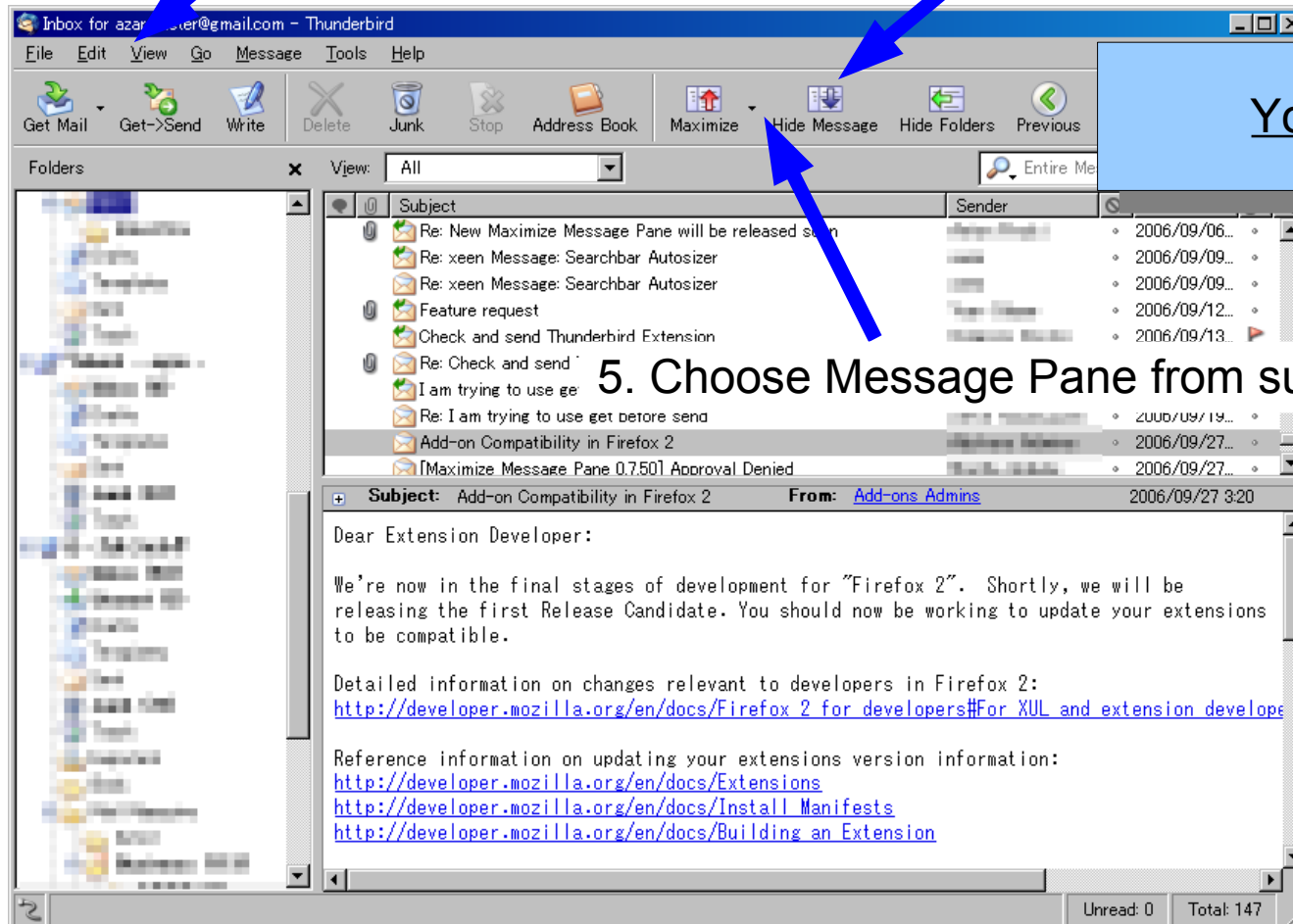
5. Shortcut Key: Shift-F8



# How to Hide Message Pane

1. Click View->Layout-> Message Pane (Thunderbird's function)

2. Click Hide Message Button



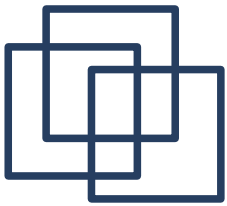
You have 5 ways to hide

5. Choose Message Pane from submenu

3. Double-click Splitter (optional)

4. Shortcut Key: F8  
(Thunderbird's function)



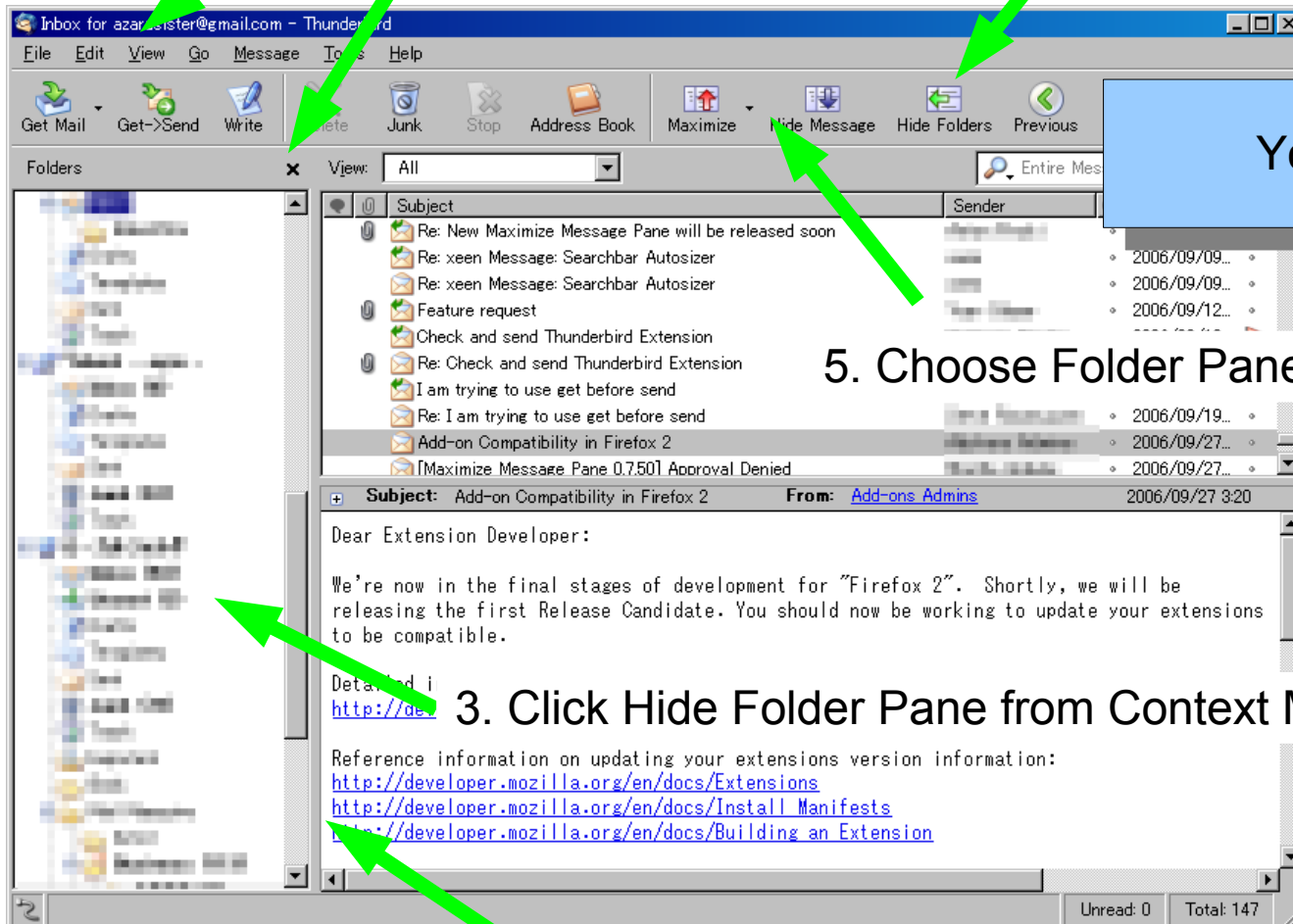


# How to Hide Folder Pane

1. Click View->Layout-> Folder Pane

2. Click Hide Folder Button

6. Click Close Button



You have 7 ways to hide

5. Choose Folder Pane from submenu

3. Click Hide Folder Pane from Context Menu

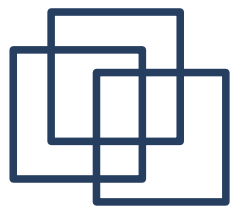
4. Shortcut Key: F9

7. Double-click Splitter

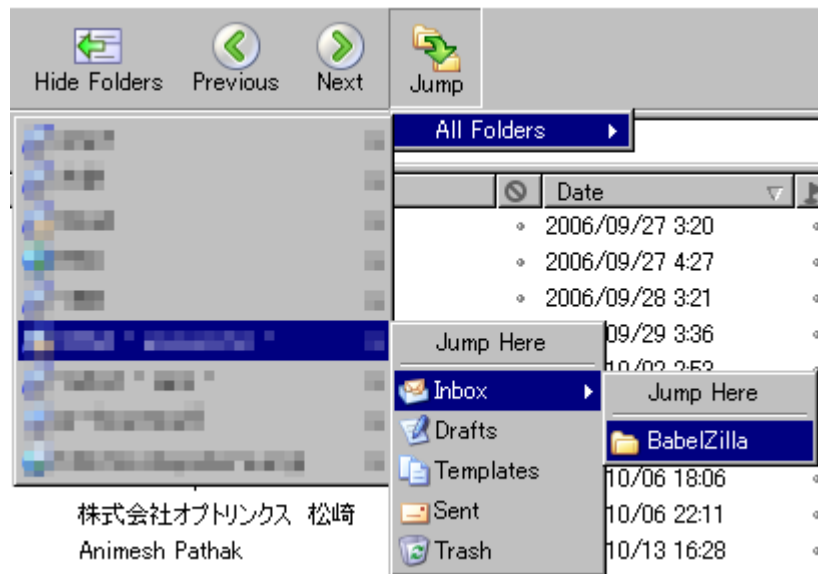


---

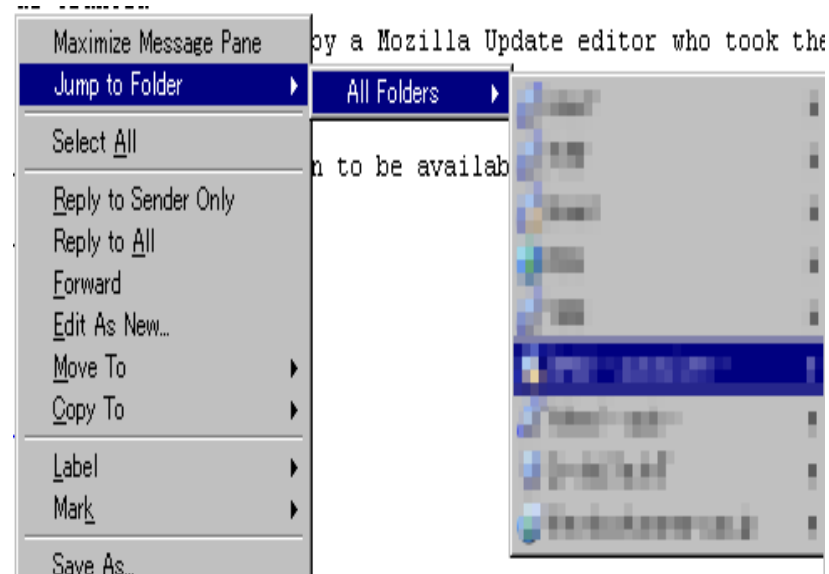
## Changing Folder Selection



# Jump Folder



Jump Button in the Toolbar



Context Menu of Thread and Message Pane

Change folder selection by “Jump Folder” function from toolbar and context menus.

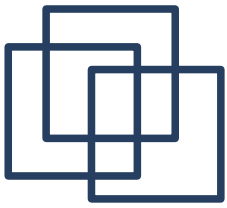
This functionality is useful when the folder pane is hidden.



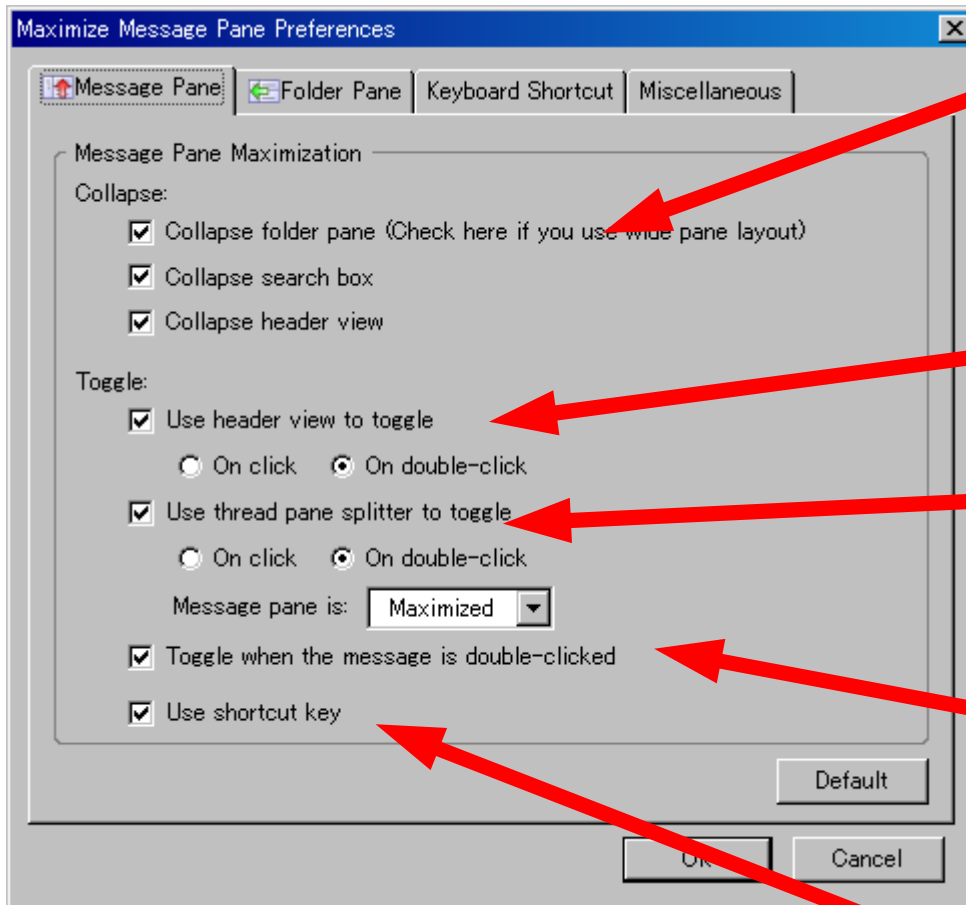
---

## Changing Settings

**\* Open extension's option dialog from Options button of Tools->Extensions**



# Message Pane



Select panes to be hidden when message pane is maximized.

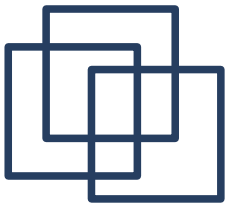
Maximize by single/double-clicking on thread pane splitter.

Maximize by single/double-clicking on thread pane splitter.

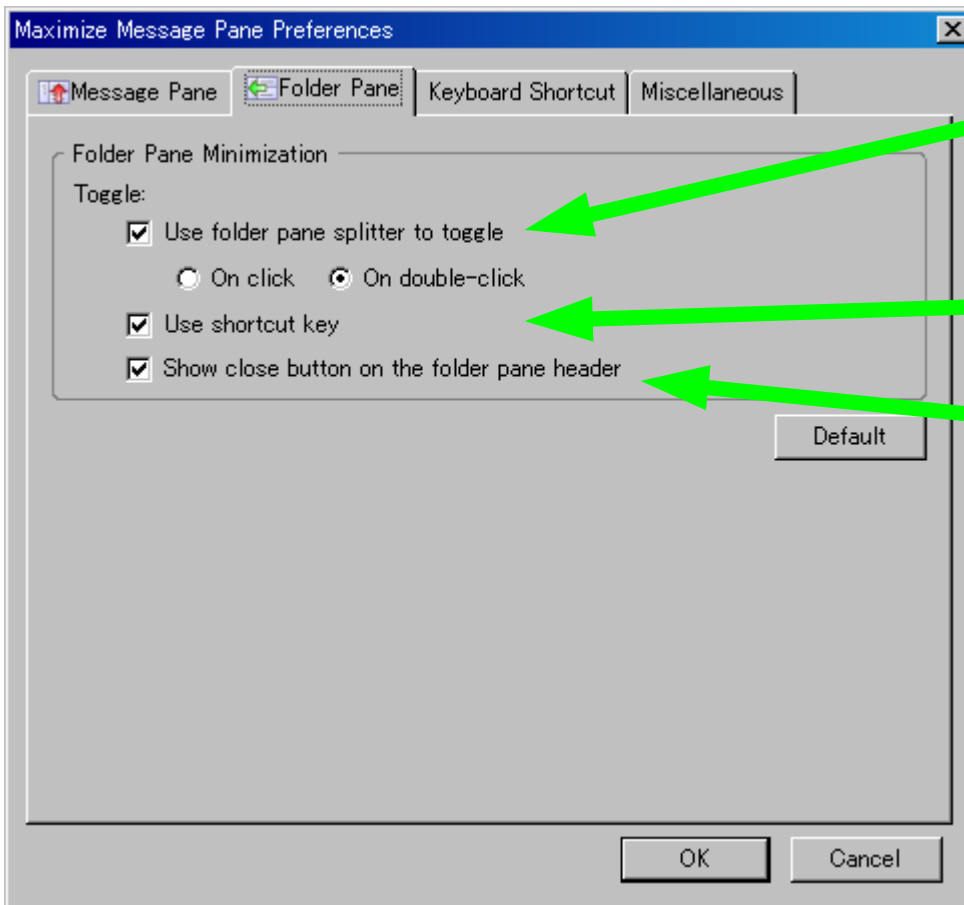
You can also choose the action: maximize or hide message pane.

Maximize by message double-clicking. If you Check it, new window doesn't open when you double-click the message.

Enables keyboard shortcut.



# Folder Pane

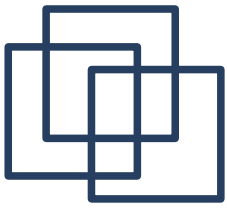


Hide by single/double-clicking on thread pane splitter.

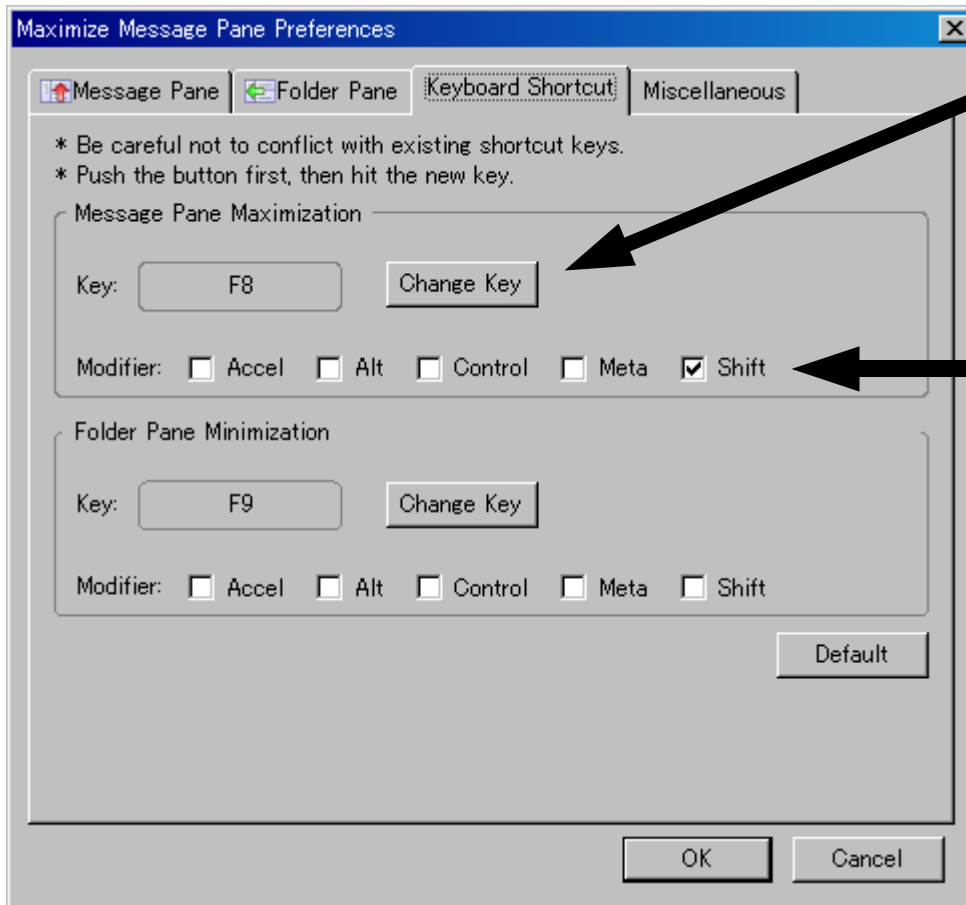
Enables keyboard shortcut.

Show "X" button above the folder pane

Enables keyboard shortcut.



# Keyboard Shortcut



Change Key. Click this button first, then hit the key you want to use.

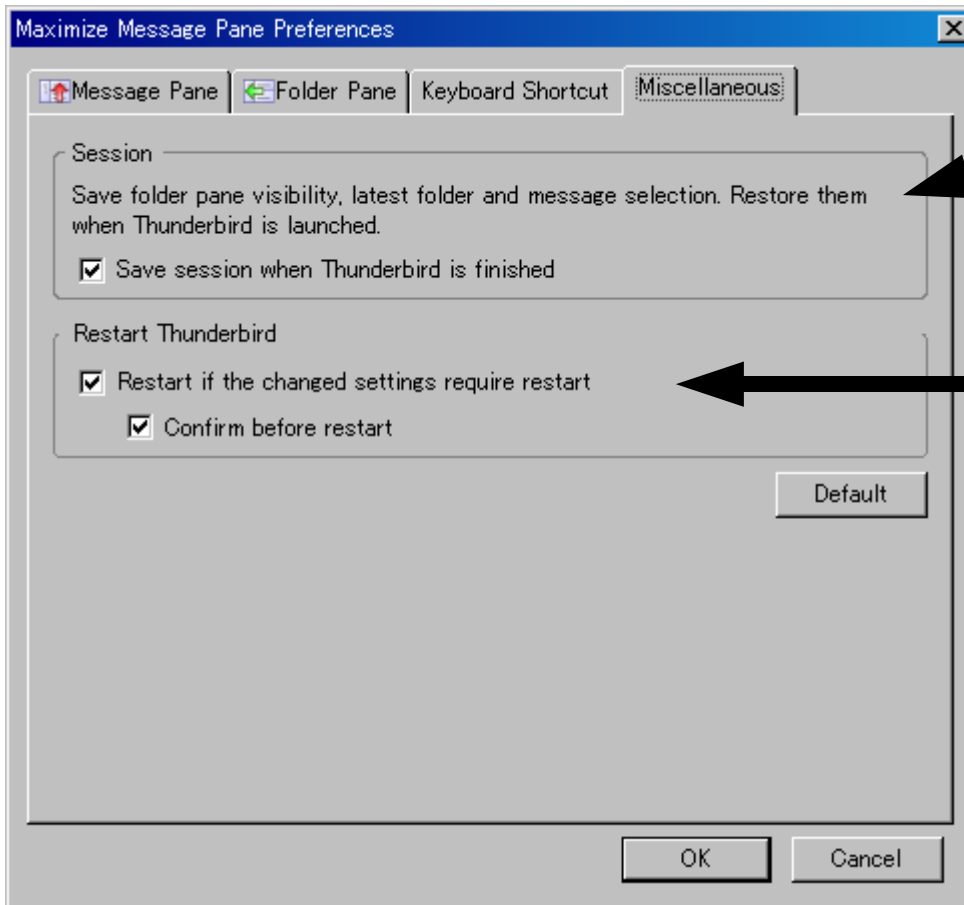
If the key which is displayed doesn't change, the key cannot use for shortcut.

Select modifiers. Accel key depends on your OS. It means ctrl on Windows, alt on Linux etc... To confirm it, choose accel and see shortcut key which is shown in the menu.

Shortcut key for hiding message pane is provided by Thunderbird. So, you cannot change by this extension.



# Misc



Remember the last selected folder. Visibility of the folder pane is also remembered. From version 0.8(now in beta), the last selected message is saved too.

Restart Thunderbird automatically if it is required.